



The Mantax Black

- Patented technology for foldable jaws only with Haglöf Sweden Calipers
- Comfortable handle for all hand sizes
- Approved and tested by independent institutes
- Various scale configurations and durable, non-wear print
- Can be ordered with factory installed Gator Eyes laser pointers



Mantax Black calipers are extra rugged with a comfortable handle, high-quality aluminum measuring scale, clear and durable graduation on both sides of the scale and patented foldable jaws.

The Mantax Black caliper is an excellent choice for economic, fast and accurate diameter measuring of standing trees and tree trunks. Mantax Black is smooth to operate and easy to carry, especially when the jaws are folded flat. Available in scale lengths and graduations from 500mm or 18" up to 950mm or 36" with the extra durable Haglöf caliper scale print on both sides of the non-reflecting aluminum scale to ensure accurate readings for many seasons. Mantax Black models are also available in special crowned/certified lengths 500mm; 600mm; 800mm and 1000 mm.

Mantax Black can be accessorized with factory installed Gator Eyes laser pointers with special scale print in selected models (see next page).



Great advantages with rounded scale and foldable jaws.

TECHNICAL SPECIFICATION MANTAX BLACK

Sizes and graduations:	500mm; (600mm); 650mm; 800mm; 950mm; 18"; 24"; 30"; 36"; Triple French Graduation in mm lengths. Crowned scales: 500mm; 600mm; 800mm; 1000mm. Laser scale, see Gator Eyes.
Weight:	500mm:710g/28.4oz. 650mm:810g/32.4oz. 800mm:915g/36.6oz. 950mm:1025g/41oz. Box weight: approx. 18-20oz
Material Scale:	Alloy coated aluminum, non-reflecting.
Material Handle:	Armoured glass fiber polycarbonate plastic.
Jaws:	Foldable aluminum and steel.
Classification:	Patented. FPA 500, 600 and 800mm.

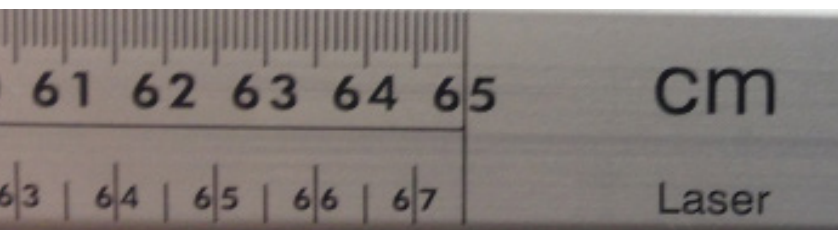


Mantax Black and Gator Eyes Laser Pointers

Order your Haglöf Mantax Black with Gator Eyes laser pointers to measure diameters also from a distance. Simply use the Mantax Black jaws to aim with the laser pointers, pull the jaws apart to measure the stem and read the result from the special printed laser scale on your Mantax Black caliper.

Measurement results need to be increased with one inch/2.54 cm, compared to the regular scale print, when using Gator Eyes. For Gator Eyes installed on Mantax Black in cm/mm graduation, refer to the scale print "Laser" scale when reading diameter results measured with Gator Eyes. For inch-graduated Mantax Black calipers, the extra inch should always be added and noted by the user. The weight of your caliper will increase with approximately 190g/7.6oz with the Gator Eyes installed.

- Use Gator Eyes when you wish to know diameters of trees from a distance, including upper stem diameters and branch sizes, without having to climb, carry long sticks or heavy ladders in the field.
- Gator Eyes are great where there are obstacles to reach a tree, such as water streams or wind throws.
- Gator Eyes increase the speed of your measuring



Aim the two perfectly aligned laser pointers as if you were actually at the stem – just pull the caliper jaws apart until the laser points are positioned where you need them to be. Read the diameter results on laser scale if available on your caliper. One inch or 2.54 cm must be added to the regular diameter scale result. If you are using Gator Eyes on a computer caliper from Haglöf (DP II, Digitech® Professional), results can be registered with the press of a button.

Mantax Black 11-200-1002: 500mm; 11-200-1003: 650mm; 11-200-1004: 800mm; 11-200-1005: 950mm.

Inch graduated scales: 11-200-1008: 18"; 11-200-1009: 24"; 11-200-1010: 30"; 11-200-1011: 36"

Triple French graduation scales: 11-200-1018: 500mm; 11-200-1019: 650 mm; 11-200-1020: 800mm; 11-200-1022: 950mm

Individually packed in carton box.

Mantax Black Gator Eyes 11-200-2001: 500mm Gator Eyes; 11-200-2002: 650mm Gator Eyes; 11-200-2003: 800mm Gator Eyes. Mantax Black caliper with factory installed laser pointers and special printed laser reading scale on mm-graduated calipers up to 800 mm. Inch graduated scales does not include special laser scale print. Available up to 30" scale length. Individually packed. Batteries for laser pointers are not included in box.



The use of green laser pointers may be prohibited or restricted in your area. Please check local legislations prior to ordering and using Gator Eyes equipped calipers.

The green laser pointers in the factory assembled Gator Eyes have great visibility and allow you to work in sunny areas and bright light. The Gator Eyes laser pointers are classified as Class II laser with 532nm wavelength. Green Gator Eyes laser have a bright and visible beam and a multi coated optical glass lens for a sharper dot at farther distances. Tested in temperatures down to +5C/41F. Never point with laser at humans, animals or vehicles, and note that restrictions on the use of laser pointers should be considered by operators before using!

TECHNICAL SPECIFICATION GATOR EYES

Size (laser only):	123x21x23.5mm/4.84"x0.83"x1.04" ea
Operation:	Pressure switch
Weight:	92g/3.25 oz incl battery
Battery:	2)CR123A Lithium battery
Temperature:	Tested down to +5°C/41°F
Wavelength:	532 nm
Housing:	Aluminum Alloy
Output:	<1mW
Dot size at 100m/yds:	60mm/2.25"
Lens:	Multi-coated optical glass lens
Laser:	Class II laser